

Subject: Quantum mechanics , Total questions: 30 , Total students: 30

Item Analysis

SD=3.17 , Average=20.53 , Median =21 , Mode =21 , MIN =15 , MAX =27 , KR-20 =0.45 , KR-21 =0.34

No.	Key	P (difficulty)	Item difficulty	r (discrimination)	Item discrimination
1	1	0.813	Very easy	0.375	Good item
2	4	0.188	Very difficult	-0.125	Poor item
3	3	0.438	Moderately difficult	0.125	Poor item
4	2	0.813	Very easy	0.125	Poor item
5	2	0.750	Moderately difficult	0.250	Fairly good item
6	2	0.750	Moderately difficult	0.000	Poor item
7	3	0.750	Moderately difficult	0.500	Very good item
8	5	0.500	Moderately difficult	0.500	Very good item
9	4	0.563	Moderately difficult	0.375	Good item
10	1	0.688	Moderately difficult	0.375	Good item
11	2	0.375	Moderately difficult	0.250	Fairly good item
12	1	0.875	Very easy	0.250	Fairly good item
13	1	1.000	Very easy	0.000	Poor item
14	1	0.750	Moderately difficult	0.250	Fairly good item
15	4	0.813	Very easy	0.125	Poor item
16	5	0.688	Moderately difficult	0.375	Good item
17	3	0.875	Very easy	0.250	Fairly good item
18	3	0.750	Moderately difficult	0.250	Fairly good item
19	5	0.563	Moderately difficult	-0.125	Poor item
20	1	0.750	Moderately difficult	0.250	Fairly good item
21	2	0.688	Moderately difficult	0.125	Poor item
22	4	0.563	Moderately difficult	0.375	Good item
23	3	0.688	Moderately difficult	0.625	Very good item
24	5	0.563	Moderately difficult	0.375	Good item
25	1	0.625	Moderately difficult	0.500	Very good item
26	5	0.750	Moderately difficult	0.500	Very good item
27	5	0.875	Very easy	0.250	Fairly good item
28	4	0.313	Moderately difficult	0.375	Good item
29	5	0.875	Very easy	0.000	Poor item
30	5	0.875	Very easy	0.250	Fairly good item

**Subject: Quantum mechanics , Total questions: 30, Total students: 30
Distractor Efficiency**

No.	Key	Choice No.	p	r
1	1	*1	0.813	0.375
		2	0.125	-0.250
		3	0.000	0.000
		4	0.000	0.000
		5	0.063	-0.125
2	4	1	0.250	0.500
		2	0.313	0.125
		3	0.250	-0.500
		*4	0.188	-0.125
		5	0.000	0.000
3	3	1	0.250	0.250
		2	0.250	-0.250
		*3	0.438	0.125
		4	0.063	-0.125
		5	0.000	0.000
4	2	1	0.000	0.000
		*2	0.813	0.125
		3	0.188	-0.125
		4	0.000	0.000
		5	0.000	0.000
5	2	1	0.125	-0.250
		*2	0.750	0.250
		3	0.125	0.000
		4	0.000	0.000
		5	0.000	0.000
6	2	1	0.125	-0.250
		*2	0.750	0.000
		3	0.125	0.250
		4	0.000	0.000
		5	0.000	0.000
7	3	1	0.125	-0.250
		2	0.125	-0.250
		*3	0.750	0.500
		4	0.000	0.000
		5	0.000	0.000
8	5	1	0.063	-0.125
		2	0.125	0.000
		3	0.063	-0.125
		4	0.250	-0.250

		*5	0.500	0.500
9	4	1	0.188	-0.125
		2	0.000	0.000
		3	0.063	-0.125
		*4	0.563	0.375
		5	0.188	-0.125
10	1	*1	0.688	0.375
		2	0.188	-0.125
		3	0.125	-0.250
		4	0.000	0.000
		5	0.000	0.000
11	2	1	0.563	-0.125
		*2	0.375	0.250
		3	0.000	0.000
		4	0.063	-0.125
		5	0.000	0.000
12	1	*1	0.875	0.250
		2	0.000	0.000
		3	0.063	-0.125
		4	0.000	0.000
		5	0.063	-0.125
13	1	*1	1.000	0.000
		2	0.000	0.000
		3	0.000	0.000
		4	0.000	0.000
		5	0.000	0.000
14	1	*1	0.750	0.250
		2	0.188	-0.125
		3	0.063	-0.125
		4	0.000	0.000
		5	0.000	0.000
15	4	1	0.000	0.000
		2	0.063	-0.125
		3	0.125	0.000
		*4	0.813	0.125
		5	0.000	0.000
16	5	1	0.000	0.000
		2	0.063	-0.125
		3	0.125	-0.250
		4	0.125	0.000
		*5	0.688	0.375
17	3	1	0.000	0.000
		2	0.063	-0.125
		*3	0.875	0.250
		4	0.063	-0.125
		5	0.000	0.000

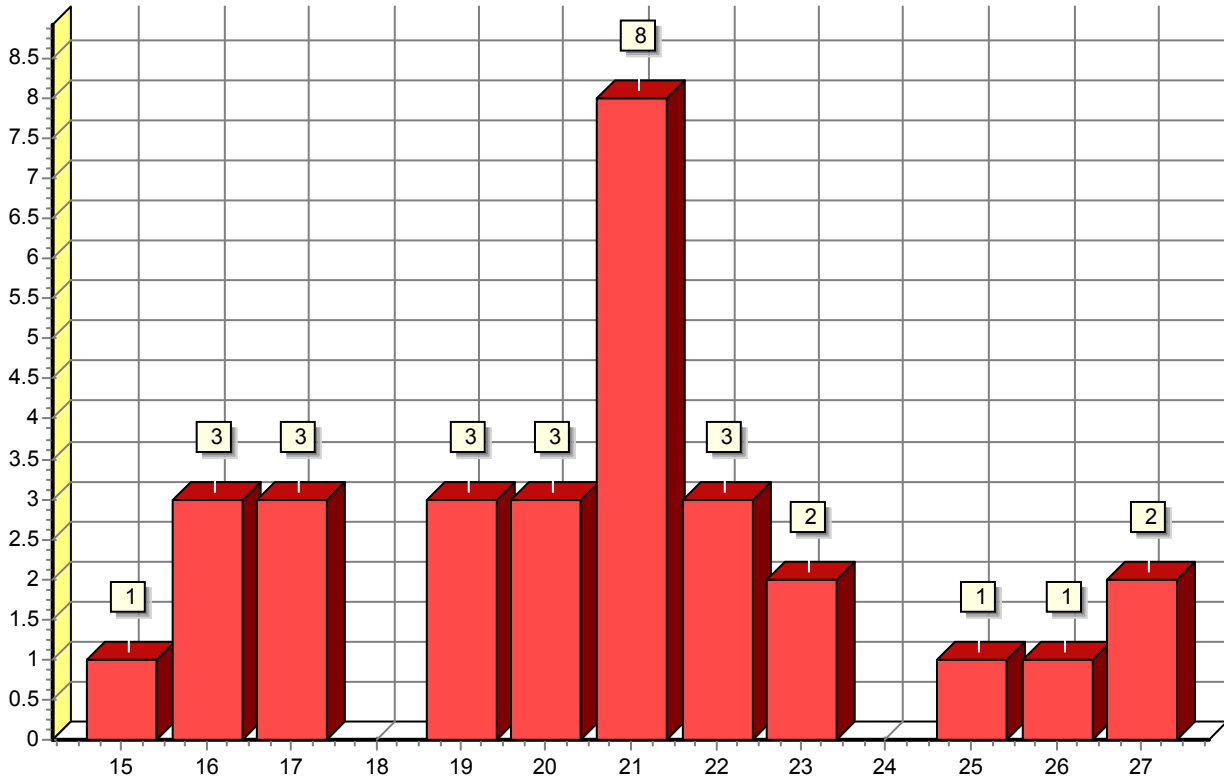
18	3	1	0.000	0.000
		2	0.188	-0.125
		*3	0.750	0.250
		4	0.063	-0.125
		5	0.000	0.000
19	5	1	0.125	0.000
		2	0.188	-0.125
		3	0.000	0.000
		4	0.125	0.250
		*5	0.563	-0.125
20	1	*1	0.750	0.250
		2	0.125	0.000
		3	0.063	-0.125
		4	0.063	-0.125
		5	0.000	0.000
21	2	1	0.063	-0.125
		*2	0.688	0.125
		3	0.188	0.125
		4	0.000	0.000
		5	0.063	-0.125
22	4	1	0.000	0.000
		2	0.250	-0.250
		3	0.188	-0.125
		*4	0.563	0.375
		5	0.000	0.000
23	3	1	0.000	0.000
		2	0.125	-0.250
		*3	0.688	0.625
		4	0.188	-0.375
		5	0.000	0.000
24	5	1	0.125	0.000
		2	0.125	-0.250
		3	0.125	-0.250
		4	0.063	0.125
		*5	0.563	0.375
25	1	*1	0.625	0.500
		2	0.000	0.000
		3	0.125	-0.250
		4	0.063	0.125
		5	0.188	-0.375
26	5	1	0.000	0.000
		2	0.000	0.000
		3	0.063	-0.125
		4	0.188	-0.375
		*5	0.750	0.500
27	5	1	0.000	0.000

		2	0.000	0.000
		3	0.063	-0.125
		4	0.063	-0.125
		*5	0.875	0.250
28	4	1	0.000	0.000
		2	0.000	0.000
		3	0.000	0.000
		*4	0.313	0.375
		5	0.688	-0.375
29	5	1	0.000	0.000
		2	0.000	0.000
		3	0.000	0.000
		4	0.125	0.000
		*5	0.875	0.000
30	5	1	0.000	0.000
		2	0.000	0.000
		3	0.000	0.000
		4	0.125	-0.250
		*5	0.875	0.250

Distribution

Subject: Quantum mechanics , Total questions: 30 , Total students: 30

No. of students

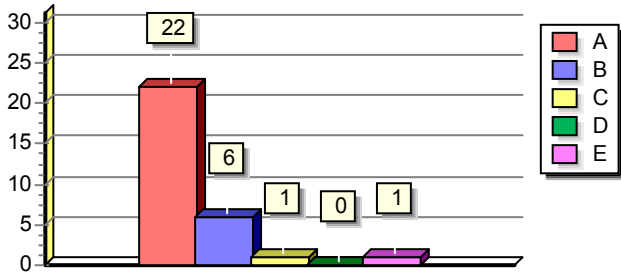


No. of correct answers

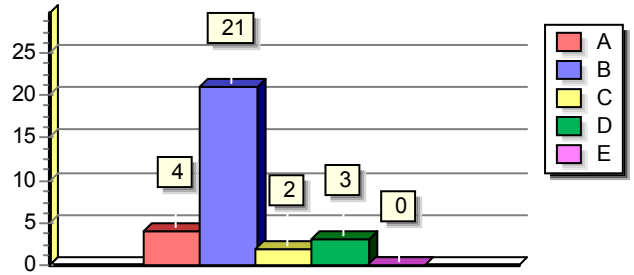
Histogram

Subject: Quantum mechanics , Total questions: 30 , Total students: 30

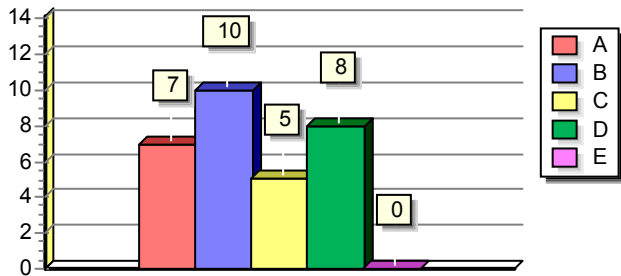
Question: 1



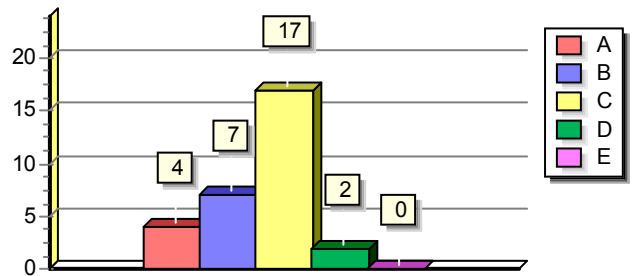
Question: 6



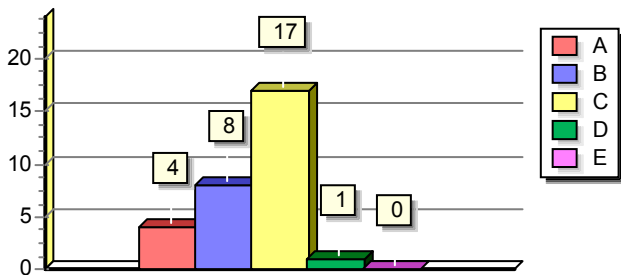
Question: 2



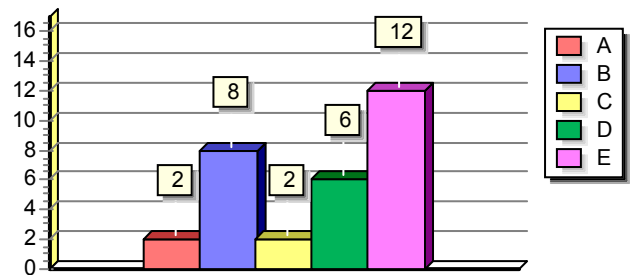
Question: 7



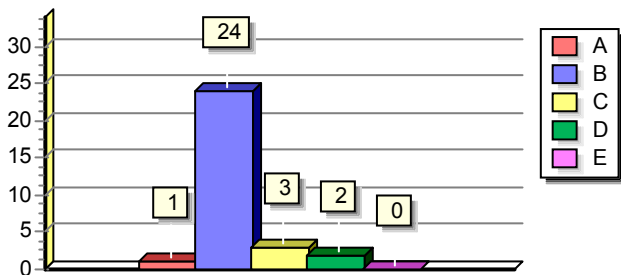
Question: 3



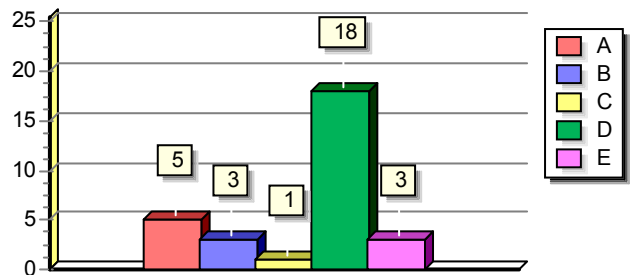
Question: 8



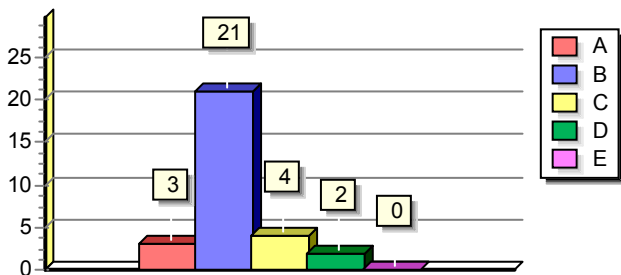
Question: 4



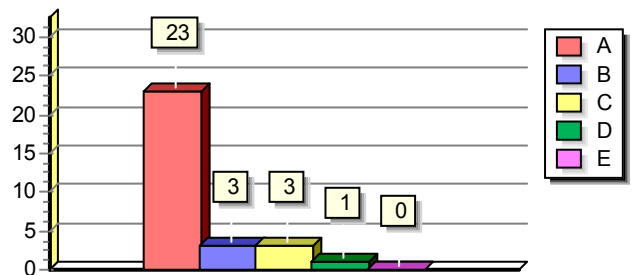
Question: 9



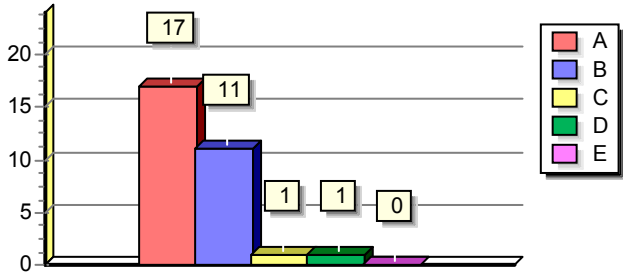
Question: 5



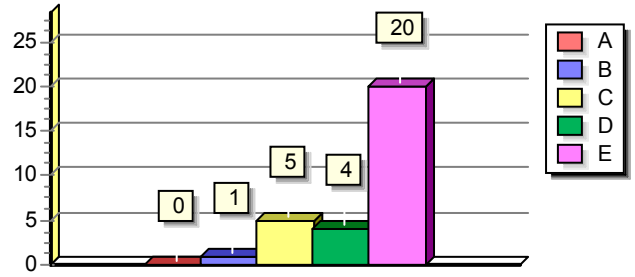
Question: 10



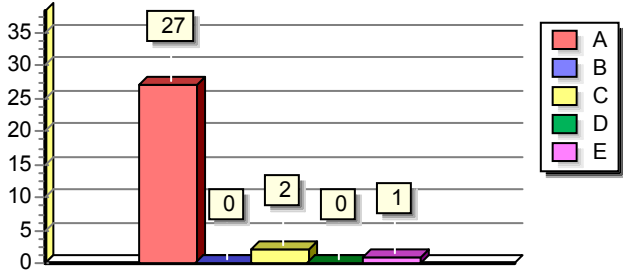
Question: 11



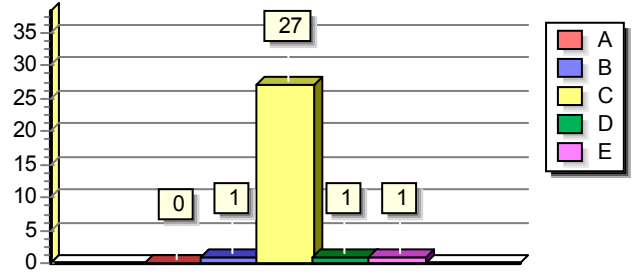
Question: 16



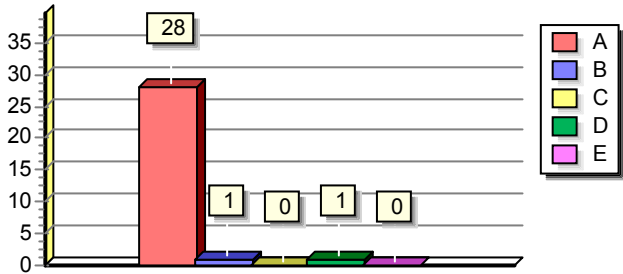
Question: 12



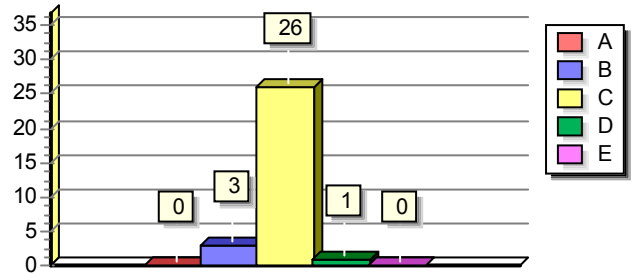
Question: 17



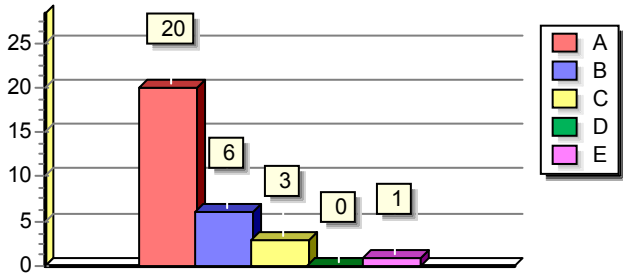
Question: 13



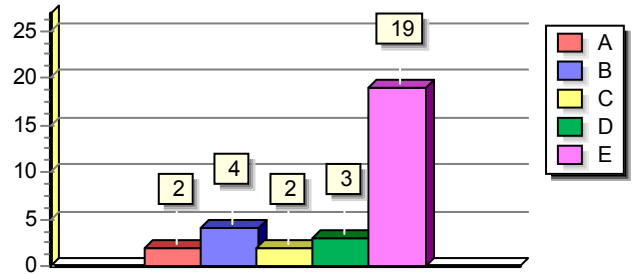
Question: 18



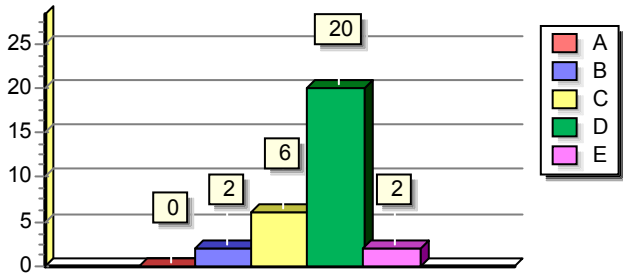
Question: 14



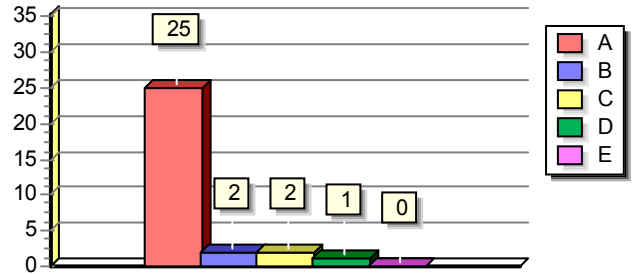
Question: 19



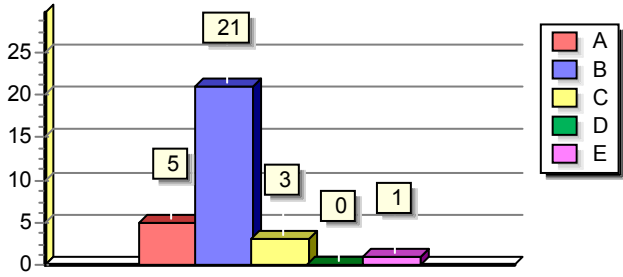
Question: 15



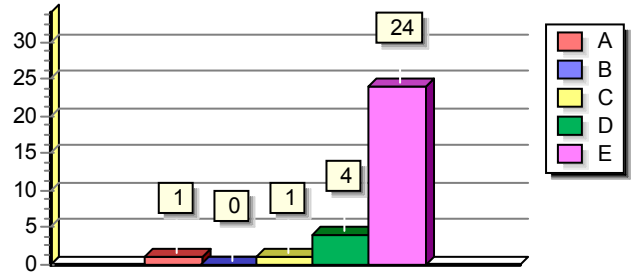
Question: 20



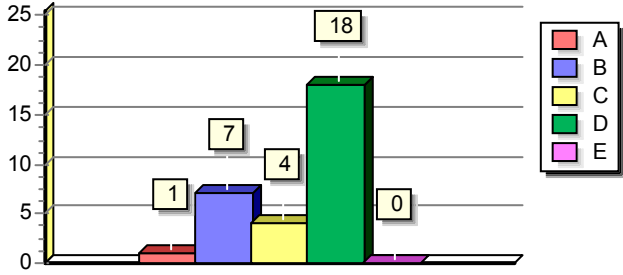
Question: 21



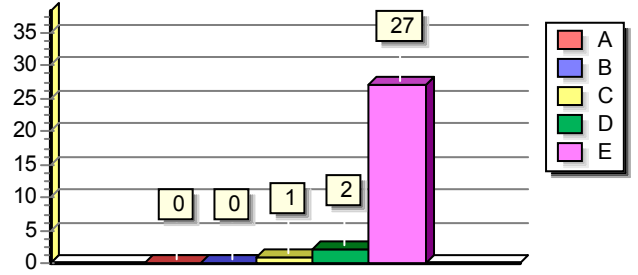
Question: 26



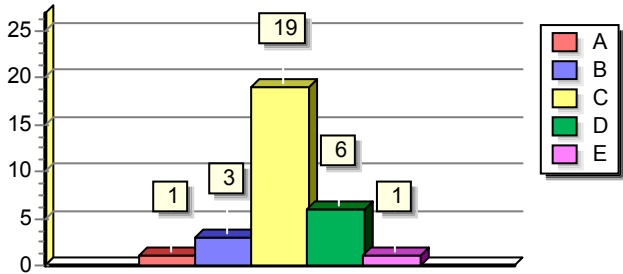
Question: 22



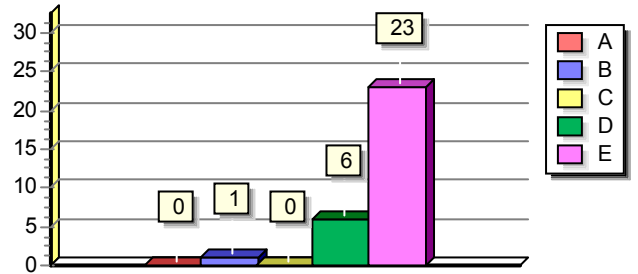
Question: 27



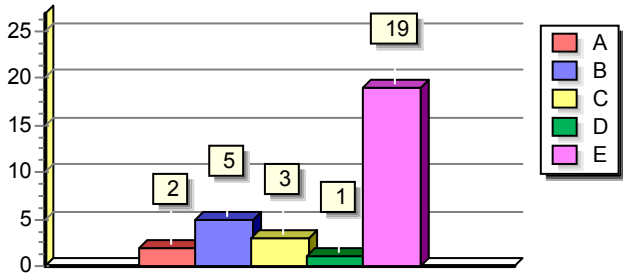
Question: 23



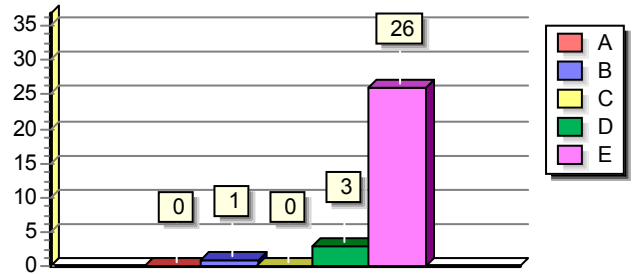
Question: 28



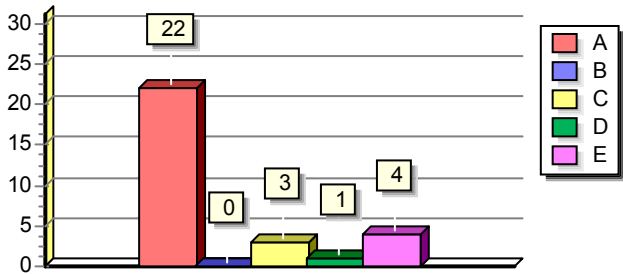
Question: 24



Question: 29



Question: 25



Question: 30

